

Des Moines River Walk

Team West

Urbandale, Valley, and Dowling High Schools

March 24, 2010

Team West

Architecture – Building

Sinisha Daljevic
DeAndré Johnson
Dylan Veik
Cort Widlowski

Architecture – Landscape

Rebecca Baldus
Ben Canham
Tom Rourke
Andy Skogland
Alex Jacobs

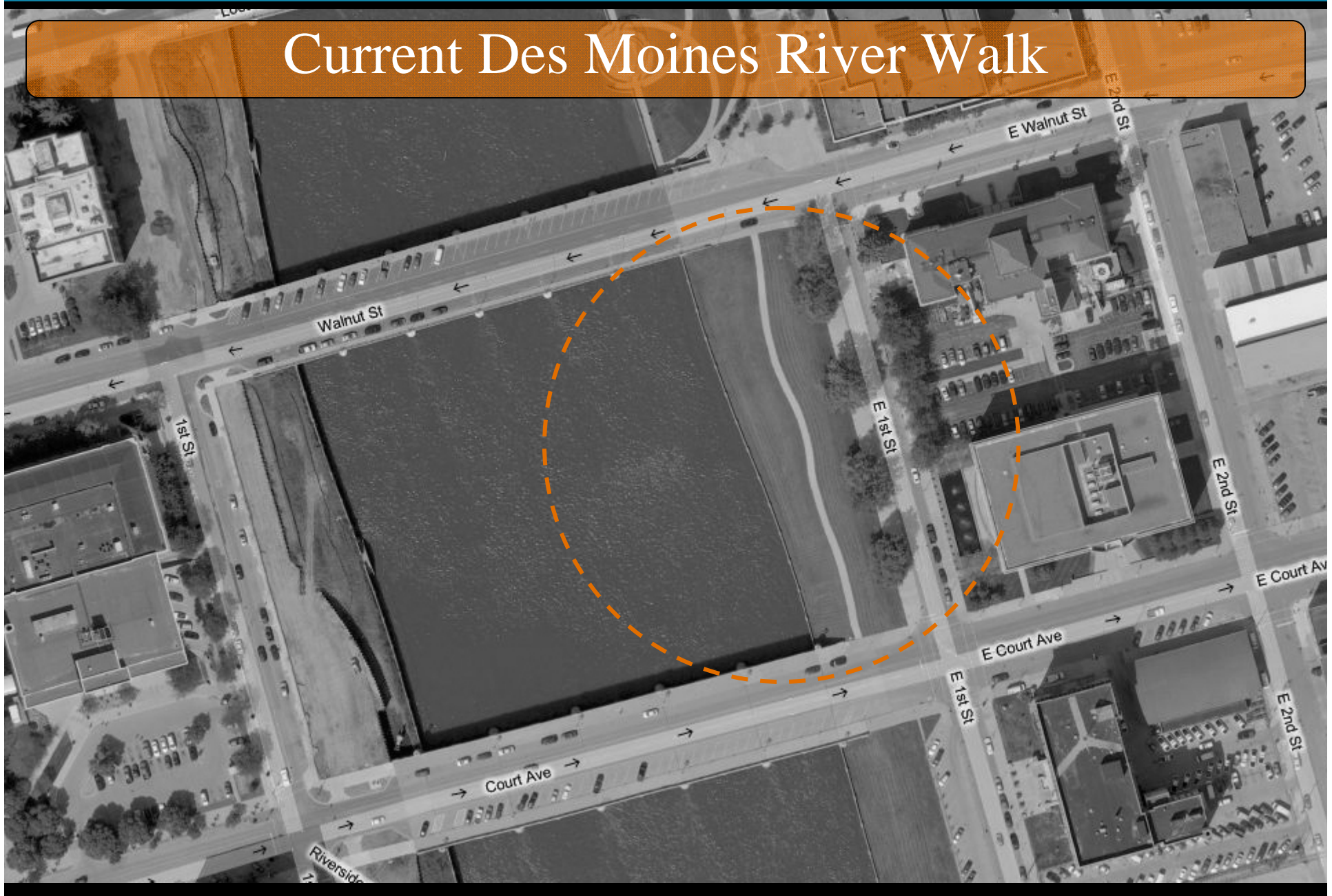
Engineering

Neil Burch
Ryan Emily Delahunt
Matthew Pick
Hannah Wheeler

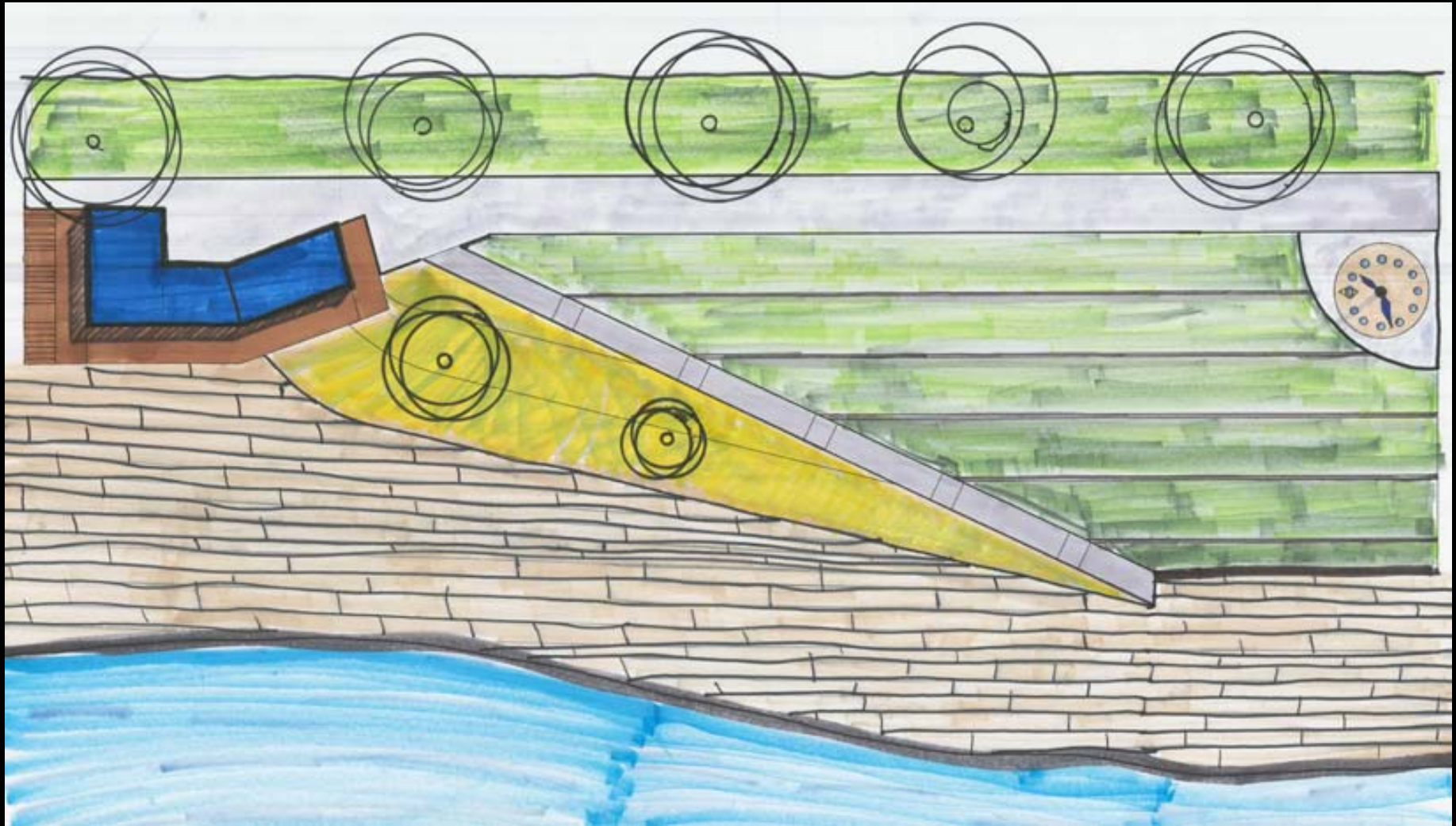
Construction

Clark Baldus
Ethan Bolander
Conner Feldman
Sam Houge

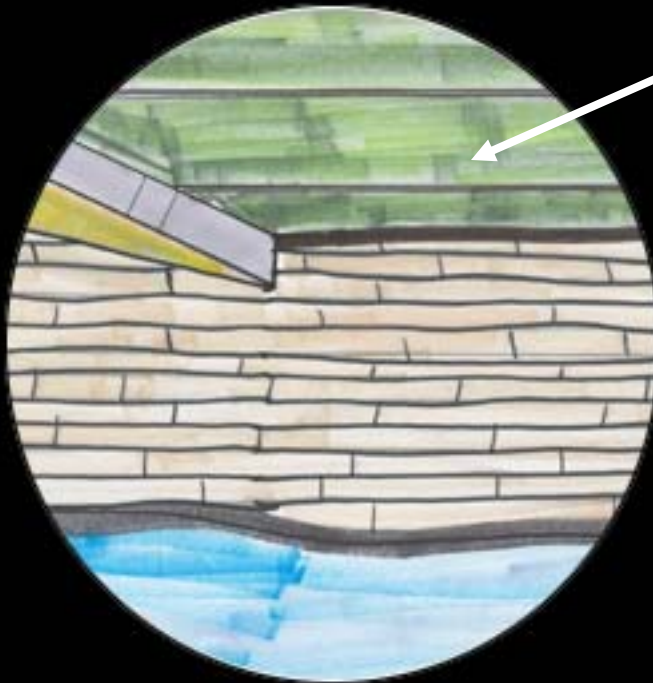
Current Des Moines River Walk



New Des Moines River Walk



Site Details



Terrace

- DESIGNED TO MANAGE SLOPE
- PROVIDE SEATING AREAS
- LOCATIONS FOR LUNCH
- ACCESSIBLE FROM SIDEWALK

Site Details

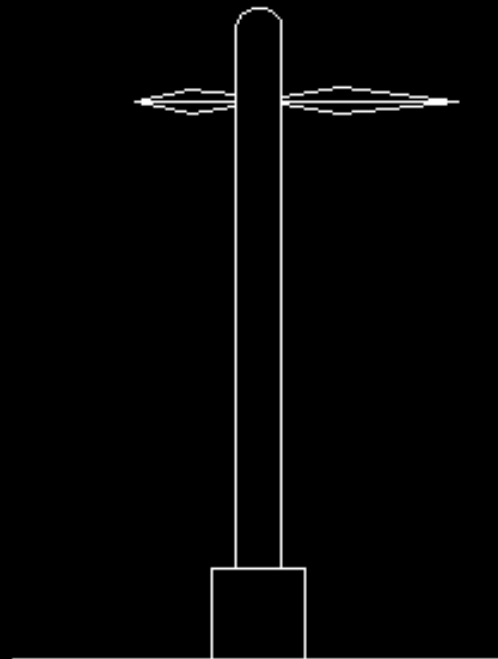
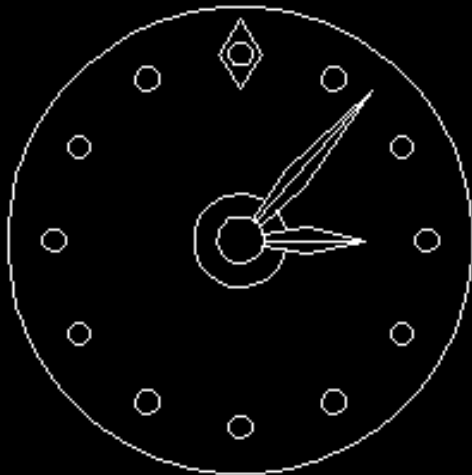


Boardwalk

- CONSTRUCTED OF WOOD TO PROVIDE TEXTURE TO THE WALKWAY
- PROVIDES ACCESS TO THE DOCK
- IDENTIFIES THE AREA OF CIRCULATION ACROSS THE SITE



Water Fountain Clock

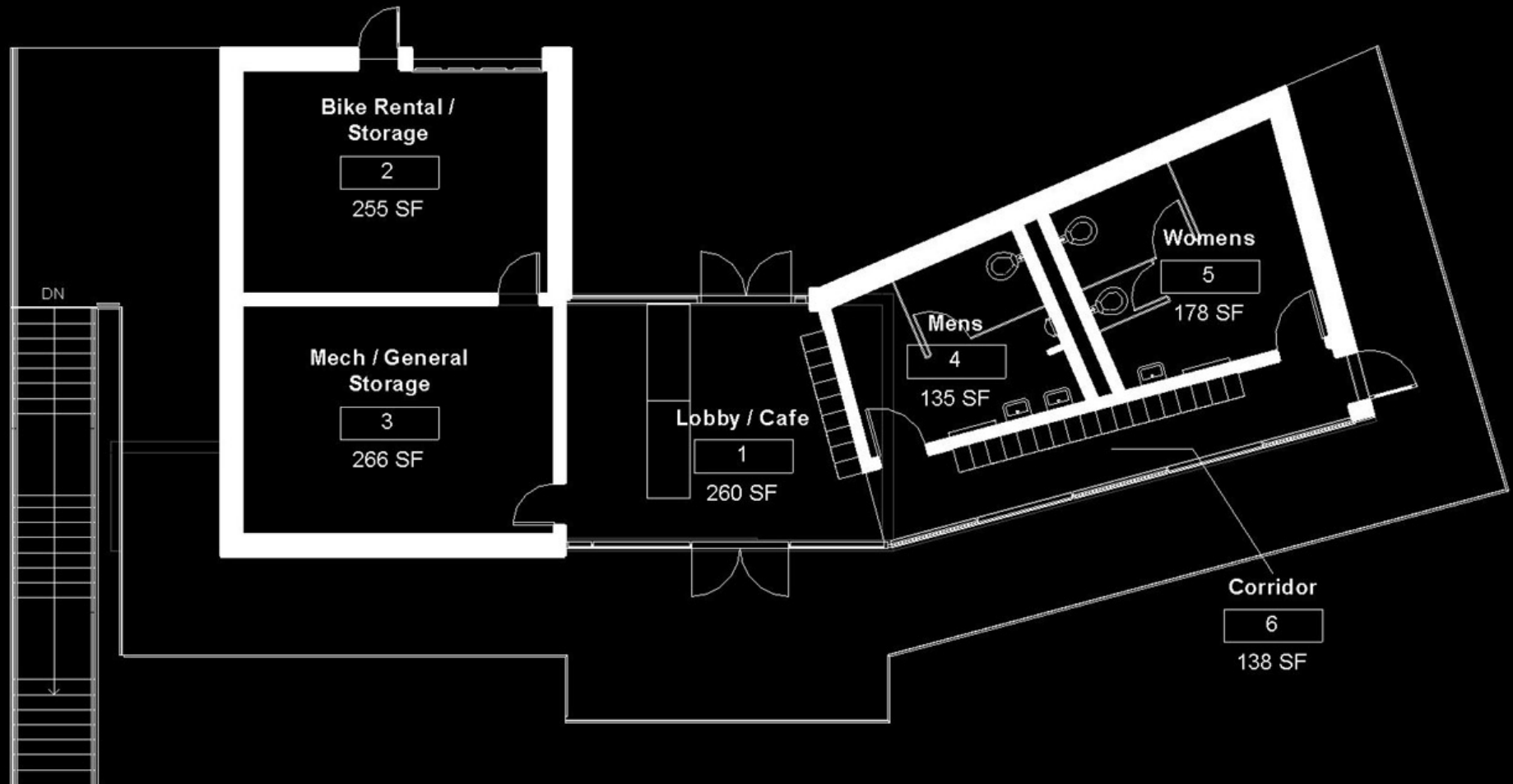


- SCULPTURAL WATER FEATURE LOCATED IN THE SOUTHWEST CORNER
- OVERLOOKS TERRACES AT STREET LEVEL.
- WATER JETS MARK THE TIME
- DIAMOND INSET MARKS 12 O'CLOCK AND IDENTIFIES NORTH

Site Lighting

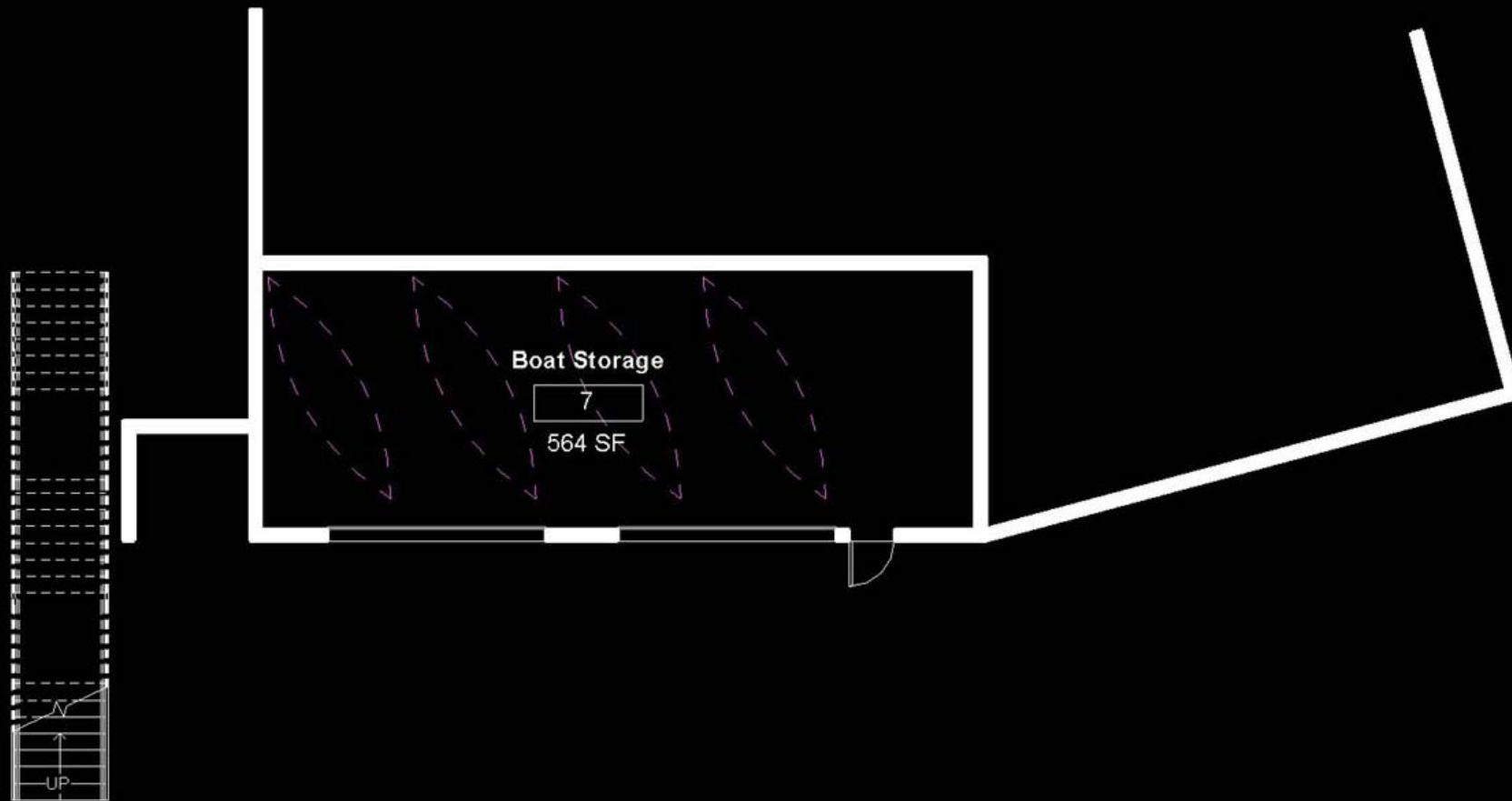
- LIGHTING UNDER THE BOARDWALK
- LIGHTS IN TERRACE WALLS
- EXISTING STREET LIGHTS
- SIDEWALK LIGHT BOLLARDS





- ACCESS AT STREET LEVEL
- VIEWS TO RIVER
- CAFÉ & RENTAL
- ELEVATED DECK

Main Level Plan



- LOWER LEVEL STORAGE
- RIVER ACCESS
- EXTERIOR STAIR TO UPPER

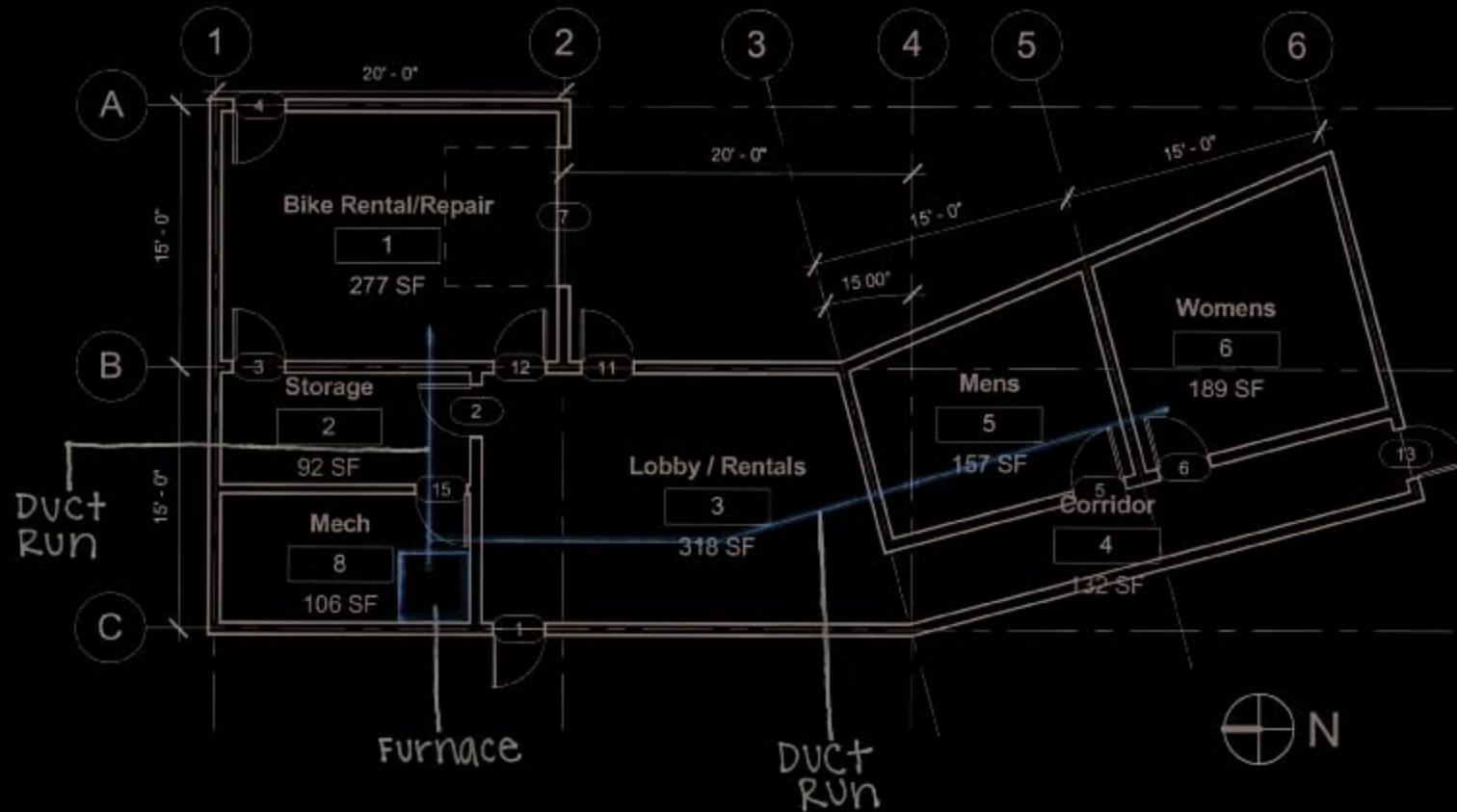
Lower Level Plan



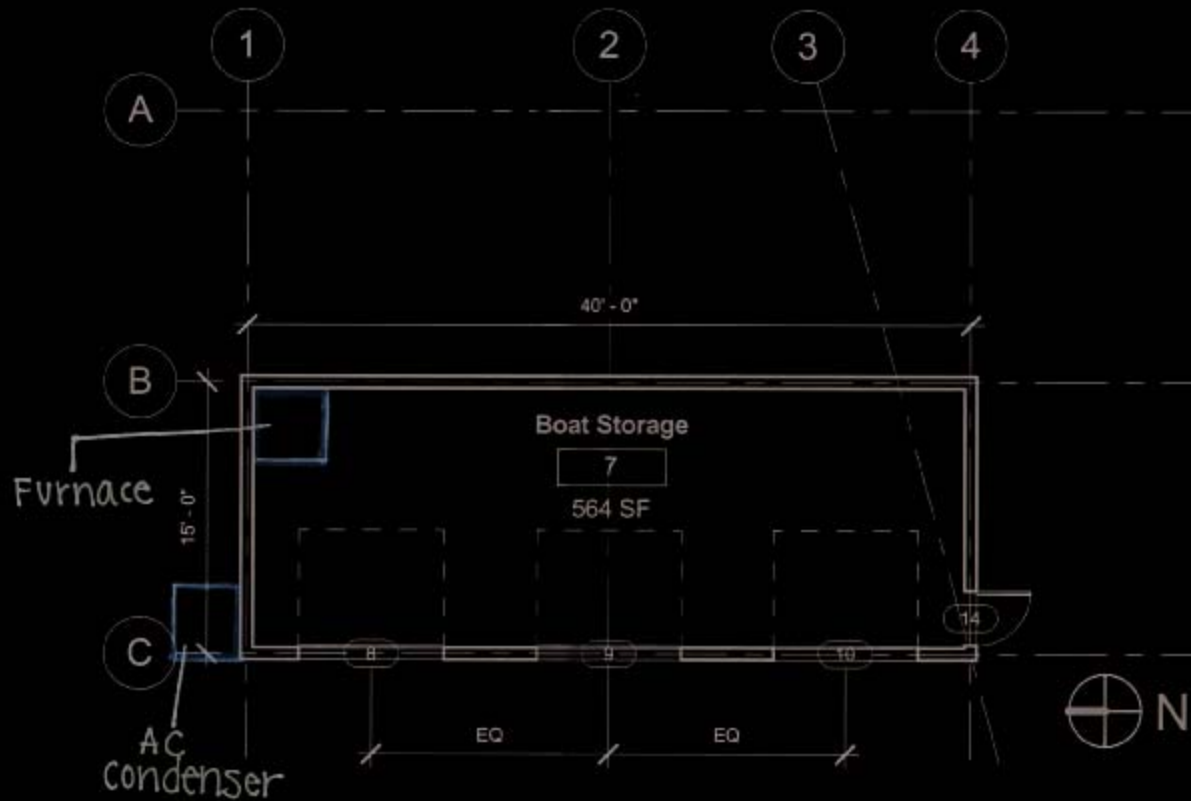




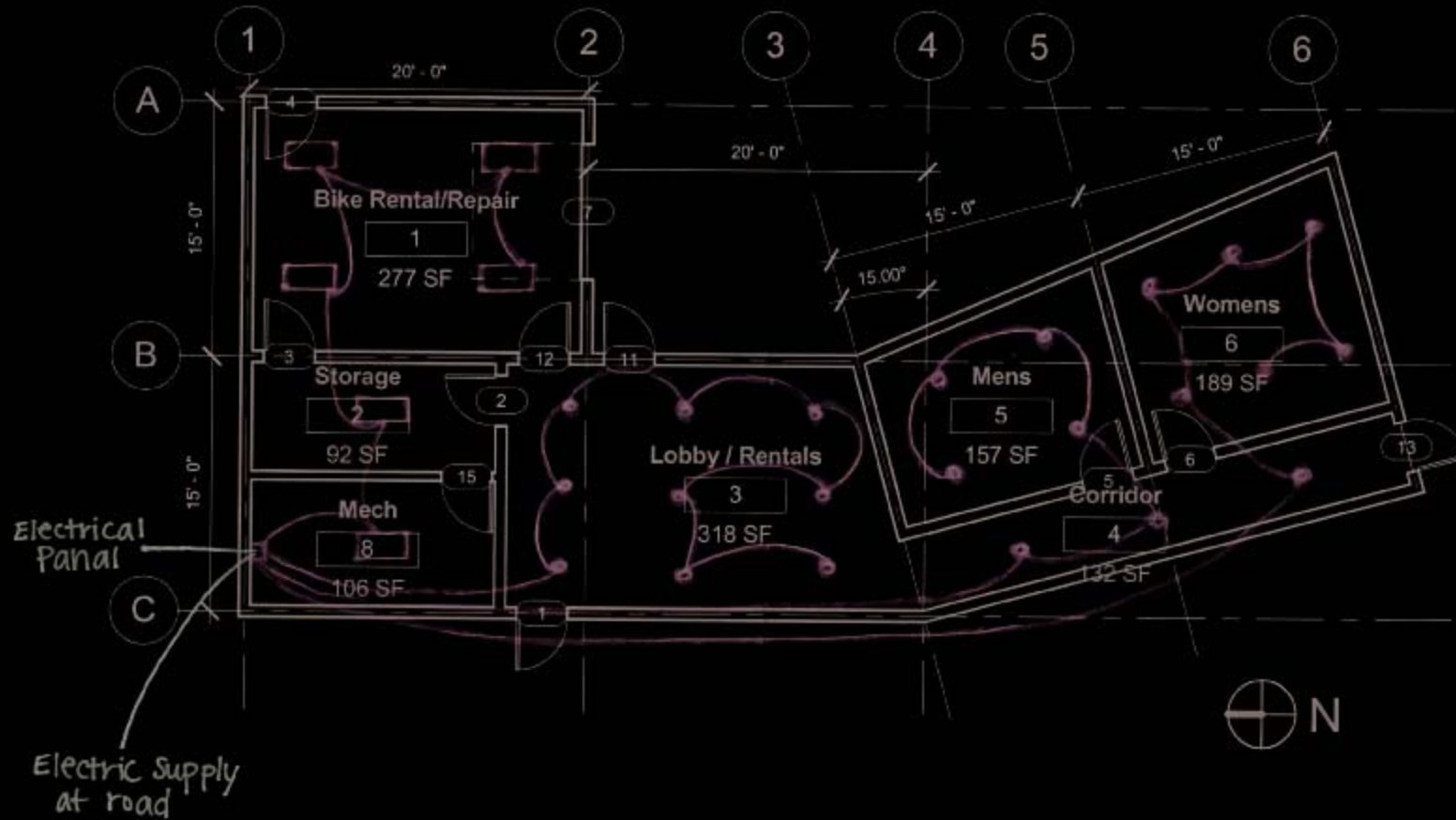
HVAC – Heating Ventilating & Air Conditioning



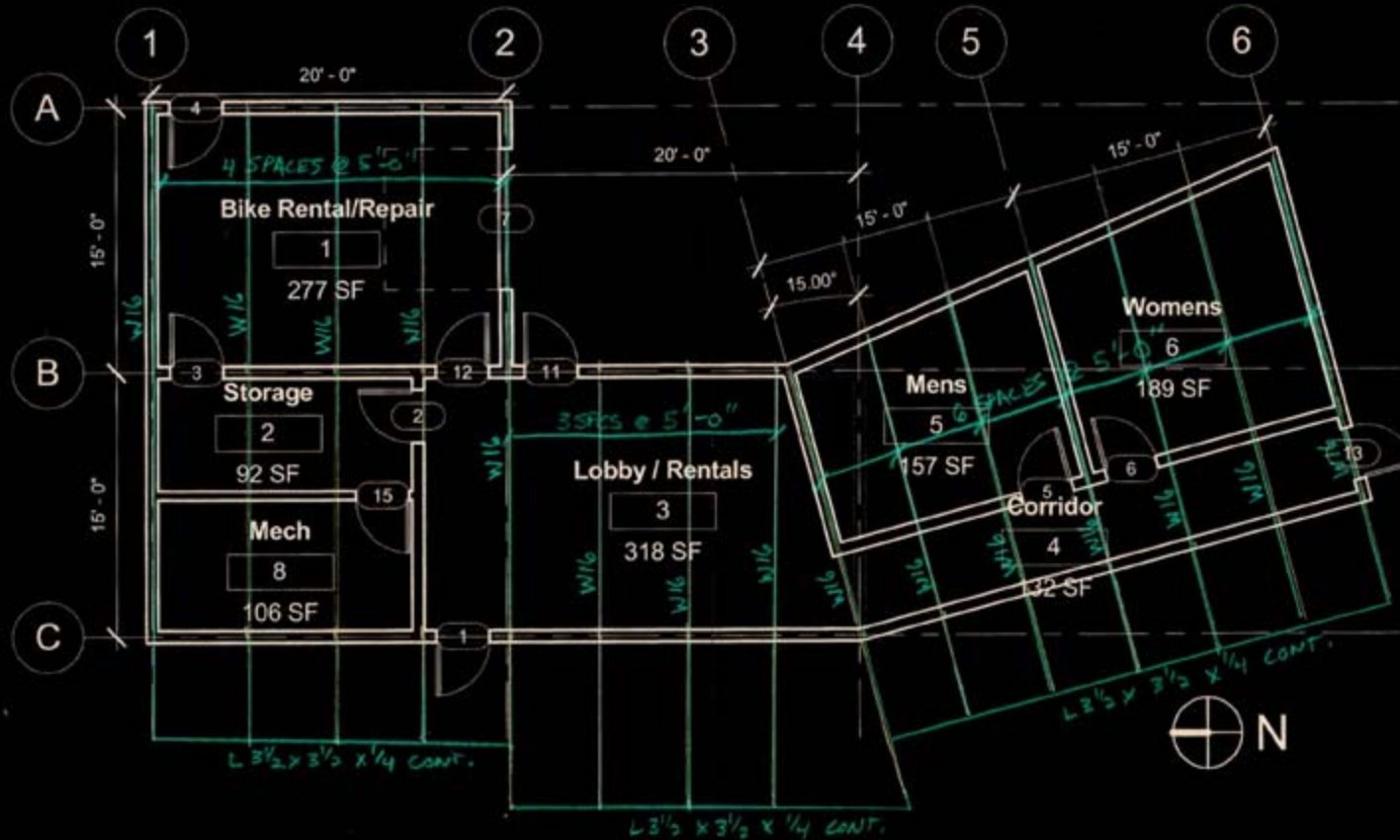
HVAC – Heating Ventilating & Air Conditioning



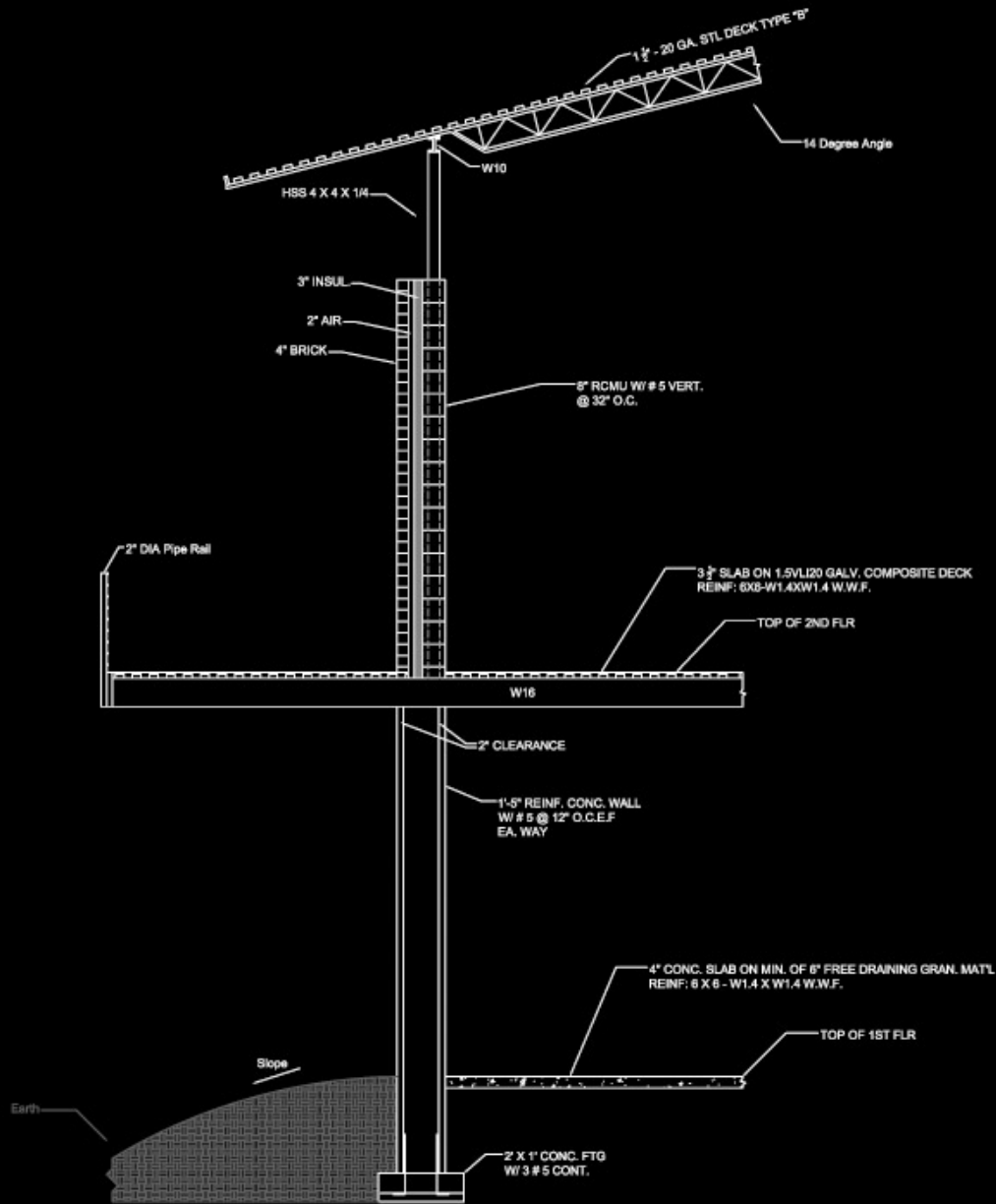
Electrical



Structural Plan



Structural Section



Construction Introduction

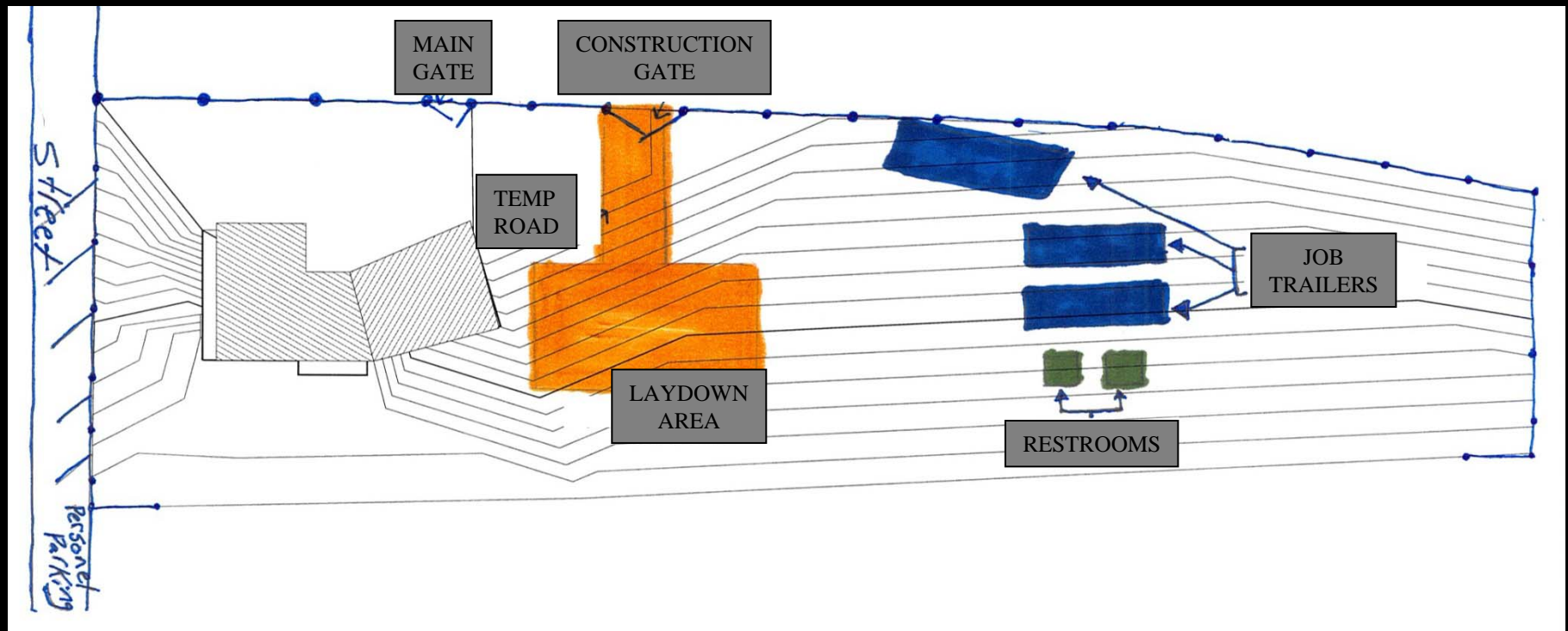
Clark Baldus

Ethan Bolander

Sam Houge

Conner Feldman

Construction – Site Utilization



Construction Estimate

- General Requirements \$245,480.00
- Existing Conditions \$530,620.00
- Concrete \$381,610.00
- Water Features \$1,147,400.00

- Grand Total \$2,305,110 .00

Construction Schedule

